



CoreLine Surface-mounted – the clear choice for LED

CoreLine surface-mounted

Whether for a new building or renovation of an existing space, customers want lighting solutions that provide quality of light and substantial energy and maintenance savings. The new CoreLine Surface-mounted range of LED products can be used to replace functional luminaires in general lighting applications. The process of selecting, installing and maintaining is so easy – it's a simple switch. Coreline Surface Mounted also provides the option of advanced connectivity and is ready to be connected to IoT based software applications such as Interact Pro.

Benefits

- Enables a simple switch from basic conventional luminaires to LED luminaires
- Energy saving of up to 45% compared to functional TL-D luminaires
- Slim design with a height of less than 40 mm

Features

- Integrated LED technology
- Slim housing
- Suspension set available as an accessory
- Recessed version also available for use in grid ceilings
- 3 hour Emergency version available
- Office compliant (UGR<19) flicker free and Non Office compliant versions available.

Application







- General lighting

CoreLine surface-mounted

Warnings and Safety

- The product is IPX0 and as such is not protected against water ingress, so we strongly recommend that the environment in which the luminaire is to be installed is suitably checked
- If the above advice is not taken and the luminaires are subject to water ingress, Philips/Signify cannot guarantee safe failure and product warranty will become void

Versions

	CoreLine Surface-mounted		SM136V 31S_37S_43S_840 PSU W20L150 OC_SPP
	SM136V 31S_37S_43S_840 PSU W20L120 NOC _SPP		SM136V 28S_34S_40S_830 PSU W20L120 NOC _SPP
	SM136V 31S_37S_43S_840 PSD W20L150 OC_SPP		SM136V 31S_37S_43S_840 PSD W20L120 OC _SPP
	SM136V 31S_37S_43S_840 PSU W20L120 OC _SPP		SM136V 28S_34S_40S_830 PSU W20L150 NOC_SPP

CoreLine surface-mounted

Versions

SM136V 31S_37S_43S_840 PSU
W20L150 NOC_SPP



SM136V 28S_34S_40S_830 PSD
W20L150 OC_SPP



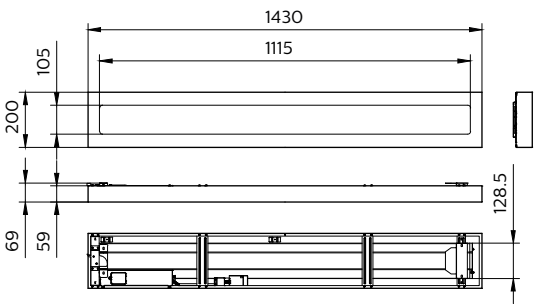
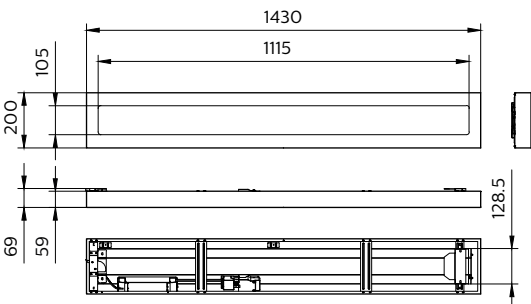
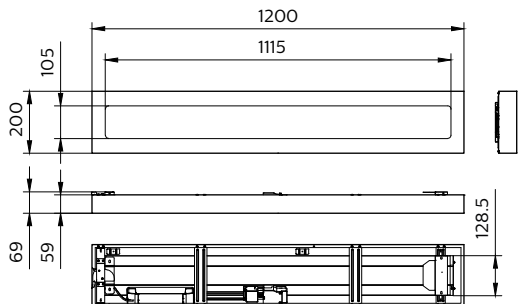
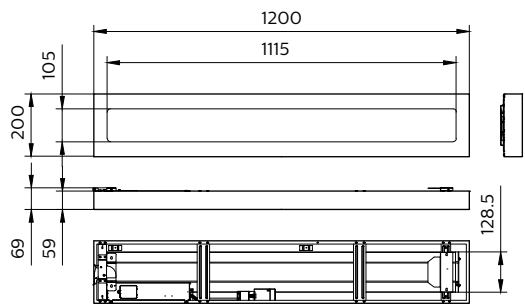
SM136V 31S_37S_43S_840 PSD
W20L120 NOC_SPP



SM136V 28S_34S_40S_830 PSD
W20L120 OC_SPP

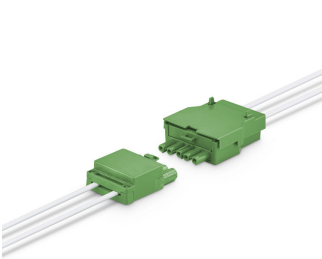


Dimensional drawing



CoreLine surface-mounted

Product details



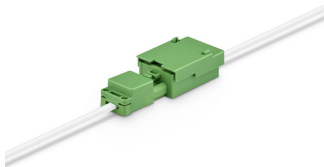
CoreLine Recessed connector PSD (dali)



CoreLine Surface-mounted Mounting clip



CoreLine Recessed connector PSU (On/Off)



CoreLine Recessed connector PSU (On/Off)



CoreLine Surface-mounted Mounting clip



CoreLine_Surface-mounted-SM136V_20x120



CoreLine Surface-mounted backside with PSD (Dali) driver and connector

CoreLine surface-mounted

Product details



CoreLine Surface-mounted edge



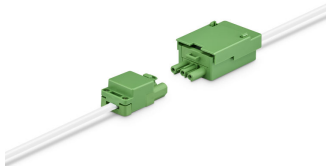
CoreLine_Surface-mounted-SM136V_20x150



CoreLine Surface-mounted Backside PSD (dali) driver 20x120



CoreLine Surface-mounted Mounting bracket



CoreLine Recessed connector PSU (On/Off)



CoreLine Surface-mounted PSU (On/OFF) driver



CoreLine Surface-mounted Backside PSU (On/Off) driver 20x150

CoreLine surface-mounted

General Information	
CE mark	Yes
Driver included	Yes
ENEC mark	ENEC mark
Flammability mark	For mounting on normally flammable surfaces
Glow-wire test	Temperature 650 °C, duration 30 s
Light source replaceable	No
Number of gear units	Unit
Light Technical	
Colour rendering index (CRI)	≥80
Flickering value (PstLM)	1
Stroboscopic effect	0.4
Operating and Electrical	
Input Voltage	220-240 V
Line Frequency	50 or 60 Hz
Mechanical and Housing	
Housing Colour	White
Approval and Application	
Mech. impact protection code	IK03
Ingress protection code	IP20/44
Initial Performance (IEC Compliant)	
Luminous flux tolerance	+/-10%
Application Conditions	
Suitable for random switching	Yes

General Information

Order Code	Full Product Name	Product family code
97555500	SM136V 31S_37S_43S/840 PSD W20L150OCELB3	SM136V
97556200	SM136V 31S_37S_43S/840 PSUW20L150NOCELB3	SM136V
51508600	SM136V 40S/830 WIA W20L150 OC	-
51509300	SM136V 43S/840 WIA W20L150 OC	-
51238200	SM136V 31S_37S_43S/840 PSU W20L150 OC	-
51231300	SM136V 31S_37S_43S/840 PSU W20L120 NOC	-
51230600	SM136V 28S_34S_40S/830 PSU W20L120 NOC	-
51240500	SM136V 31S_37S_43S/840 PSD W20L150 OC	-
51235100	SM136V 31S_37S_43S/840 PSD W20L120 OC	-
51232000	SM136V 31S_37S_43S/840 PSU W20L120 OC	-
51236800	SM136V 28S_34S_40S/830 PSU W20L150 NOC	-
51237500	SM136V 31S_37S_43S/840 PSU W20L150 NOC	-
51239900	SM136V 28S_34S_40S/830 PSD W20L150 OC	-
97553100	SM136V 31S_37S_43S/840 PSUW20L120NOCELB3	SM136V
97554800	SM136V 31S_37S_43S/840 PSD W20L120OCELB3	SM136V
51506200	SM136V 40S/830 WIA W20L120 OC	-
51507900	SM136V 43S/840 WIA W20L120 OC	-
51233700	SM136V 31S_37S_43S/840 PSD W20L120 NOC	-
51234400	SM136V 28S_34S_40S/830 PSD W20L120 OC	-

Light Technical

Order		Correlated Colour Temperature	Luminous efficacy (rated) (nom.)	Luminous Flux	Optic type
Order Code	Full Product Name				
97555500	SM136V 31S_37S_43S/840 PSD W20L150OCELB3	4000 K	126 lm/W	3,100 lm	Wide beam
97556200	SM136V 31S_37S_43S/840 PSUW20L150NOCELB3	4000 K	126 lm/W	3,100 lm	Wide beam
51508600	SM136V 40S/830 WIA W20L150 OC	3000 K	135 lm/W	4,000 lm	Beam angle 84°
51509300	SM136V 43S/840 WIA W20L150 OC	4000 K	140 lm/W	4,300 lm	Beam angle 84°
Order		Correlated Colour Temperature	Luminous efficacy (rated) (nom.)	Luminous Flux	Optic type
Order Code	Full Product Name				
51238200	SM136V 31S_37S_43S/840 PSU W20L150 OC	4000 K	140 lm/W	3,100 lm	Beam angle 84°
51231300	SM136V 31S_37S_43S/840 PSU W20L120 NOC	4000 K	140 lm/W	3,100 lm	Beam angle 100°
51230600	SM136V 28S_34S_40S/830 PSU W20L120 NOC	3000 K	130 lm/W	2,800 lm	Beam angle 100°
51240500	SM136V 31S_37S_43S/840 PSD W20L150 OC	4000 K	140 lm/W	3,100 lm	Beam angle 84°

CoreLine surface-mounted

Order Code	Full Product Name	Correlated Colour Temperature	Luminous efficacy (rated) (nom.)	Luminous Flux	Optic type
51235100	SM136V 31S_37S_43S/840 PSD W20L120 OC	4000 K	140 lm/W	3,100 lm	Beam angle 84°
51232000	SM136V 31S_37S_43S/840 PSU W20L120 OC	4000 K	140 lm/W	3,100 lm	Beam angle 84°
51236800	SM136V 28S_34S_40S/830 PSU W20L150 NOC	3000 K	130 lm/W	2,800 lm	Beam angle 100°
51237500	SM136V 31S_37S_43S/840 PSU W20L150 NOC	4000 K	140 lm/W	3,100 lm	Beam angle 100°
51239900	SM136V 28S_34S_40S/830 PSD W20L150 OC	3000 K	130 lm/W	2,800 lm	Beam angle 84°
97553100	SM136V 31S_37S_43S/840 PSUW20L120NOCELB3	4000 K	126 lm/W	3,100 lm	Wide beam

Operating and Electrical

Order Code	Full Product Name	Power Consumption
97555500	SM136V 31S_37S_43S/840 PSD W20L150OCELB3	34 W
97556200	SM136V 31S_37S_43S/840 PSUW20L150NOCELB3	34 W
51508600	SM136V 40S/830 WIA W20L150 OC	31 W
51509300	SM136V 43S/840 WIA W20L150 OC	31 W
51238200	SM136V 31S_37S_43S/840 PSU W20L150 OC	31 W
51231300	SM136V 31S_37S_43S/840 PSU W20L120 NOC	31 W
51230600	SM136V 28S_34S_40S/830 PSU W20L120 NOC	31 W
51240500	SM136V 31S_37S_43S/840 PSD W20L150 OC	31 W
51235100	SM136V 31S_37S_43S/840 PSD W20L120 OC	31 W
51232000	SM136V 31S_37S_43S/840 PSU W20L120 OC	31 W

Temperature

Order Code	Full Product Name	Ambient temperature range
97555500	SM136V 31S_37S_43S/840 PSD W20L150OCELB3	0 to +25 °C
97556200	SM136V 31S_37S_43S/840 PSUW20L150NOCELB3	0 to +25 °C
51508600	SM136V 40S/830 WIA W20L150 OC	-10 to +40 °C
51509300	SM136V 43S/840 WIA W20L150 OC	-10 to +40 °C
51238200	SM136V 31S_37S_43S/840 PSU W20L150 OC	-10 to +40 °C
51231300	SM136V 31S_37S_43S/840 PSU W20L120 NOC	-10 to +40 °C
51230600	SM136V 28S_34S_40S/830 PSU W20L120 NOC	-10 to +40 °C
51240500	SM136V 31S_37S_43S/840 PSD W20L150 OC	-10 to +40 °C

Order Code	Full Product Name	Correlated Colour Temperature	Luminous efficacy (rated) (nom.)	Luminous Flux	Optic type
97554800	SM136V 31S_37S_43S/840 PSD W20L120OCELB3	4000 K	126 lm/W	3,100 lm	Wide beam
51506200	SM136V 40S/830 WIA W20L120 OC	3000 K	135 lm/W	4,000 lm	Beam angle 84°
51507900	SM136V 43S/840 WIA W20L120 OC	4000 K	140 lm/W	4,300 lm	Beam angle 84°
51233700	SM136V 31S_37S_43S/840 PSD W20L120 NOC	4000 K	140 lm/W	3,100 lm	Beam angle 100°
51234400	SM136V 28S_34S_40S/830 PSD W20L120 OC	3000 K	130 lm/W	2,800 lm	Beam angle 84°

Order Code	Full Product Name	Power Consumption
51236800	SM136V 28S_34S_40S/830 PSU W20L150 NOC	31 W
51237500	SM136V 31S_37S_43S/840 PSU W20L150 NOC	31 W
51239900	SM136V 28S_34S_40S/830 PSD W20L150 OC	31 W
97553100	SM136V 31S_37S_43S/840 PSUW20L120NOCELB3	34 W
97554800	SM136V 31S_37S_43S/840 PSD W20L120OCELB3	34 W
51506200	SM136V 40S/830 WIA W20L120 OC	31 W
51507900	SM136V 43S/840 WIA W20L120 OC	31 W
51233700	SM136V 31S_37S_43S/840 PSD W20L120 NOC	31 W
51234400	SM136V 28S_34S_40S/830 PSD W20L120 OC	31 W

Order Code	Full Product Name	Ambient temperature range
51235100	SM136V 31S_37S_43S/840 PSD W20L120 OC	-10 to +40 °C
51232000	SM136V 31S_37S_43S/840 PSU W20L120 OC	-10 to +40 °C
51236800	SM136V 28S_34S_40S/830 PSU W20L150 NOC	-10 to +40 °C
51237500	SM136V 31S_37S_43S/840 PSU W20L150 NOC	-10 to +40 °C
51239900	SM136V 28S_34S_40S/830 PSD W20L150 OC	-10 to +40 °C
97553100	SM136V 31S_37S_43S/840 PSUW20L120NOCELB3	0 to +25 °C
97554800	SM136V 31S_37S_43S/840 PSD W20L120OCELB3	0 to +25 °C

CoreLine surface-mounted

Order Code	Full Product Name	Ambient temperature range
51506200	SM136V 40S/830 WIA W20L120 OC	-10 to +40 °C
51507900	SM136V 43S/840 WIA W20L120 OC	-10 to +40 °C
51233700	SM136V 31S_37S_43S/840 PSD W20L120 NOC	-10 to +40 °C

Controls and Dimming

Order Code	Full Product Name	Dimmable
97555500	SM136V 31S_37S_43S/840 PSD W20L150OCELB3	Yes
97556200	SM136V 31S_37S_43S/840 PSUW20L150NOCELB3	No
51508600	SM136V 40S/830 WIA W20L150 OC	Yes
51509300	SM136V 43S/840 WIA W20L150 OC	Yes
51238200	SM136V 31S_37S_43S/840 PSU W20L150 OC	No
51231300	SM136V 31S_37S_43S/840 PSU W20L120 NOC	No
51230600	SM136V 28S_34S_40S/830 PSU W20L120 NOC	No
51240500	SM136V 31S_37S_43S/840 PSD W20L150 OC	Yes
51235100	SM136V 31S_37S_43S/840 PSD W20L120 OC	Yes
51232000	SM136V 31S_37S_43S/840 PSU W20L120 OC	No

Approval and Application

Order Code	Full Product Name	Protection class IEC
97555500	SM136V 31S_37S_43S/840 PSD W20L150OCELB3	Safety class II
97556200	SM136V 31S_37S_43S/840 PSUW20L150NOCELB3	Safety class I
51508600	SM136V 40S/830 WIA W20L150 OC	Safety class II
51509300	SM136V 43S/840 WIA W20L150 OC	Safety class II
51238200	SM136V 31S_37S_43S/840 PSU W20L150 OC	Safety class I
51231300	SM136V 31S_37S_43S/840 PSU W20L120 NOC	Safety class I
51230600	SM136V 28S_34S_40S/830 PSU W20L120 NOC	Safety class I
51240500	SM136V 31S_37S_43S/840 PSD W20L150 OC	Safety class II
51235100	SM136V 31S_37S_43S/840 PSD W20L120 OC	Safety class II
51232000	SM136V 31S_37S_43S/840 PSU W20L120 OC	Safety class I

Initial Performance (IEC Compliant)

Order Code	Full Product Name	Initial chromaticity
97555500	SM136V 31S_37S_43S/840 PSD W20L150OCELB3	(0.38, 0.38) SDCM ≤3
97556200	SM136V 31S_37S_43S/840 PSUW20L150NOCELB3	(0.38, 0.38) SDCM ≤3
51508600	SM136V 40S/830 WIA W20L150 OC	(0.43, 0.40) SDCM ≤3
51509300	SM136V 43S/840 WIA W20L150 OC	(0.38, 0.38) SDCM ≤3
51238200	SM136V 31S_37S_43S/840 PSU W20L150 OC	(0.38, 0.38) SDCM ≤3
51231300	SM136V 31S_37S_43S/840 PSU W20L120 NOC	(0.38, 0.38) SDCM ≤3
51230600	SM136V 28S_34S_40S/830 PSU W20L120 NOC	(0.43, 0.40) SDCM ≤3
51240500	SM136V 31S_37S_43S/840 PSD W20L150 OC	(0.38, 0.38) SDCM ≤3
51235100	SM136V 31S_37S_43S/840 PSD W20L120 OC	(0.38, 0.38) SDCM ≤3
51232000	SM136V 31S_37S_43S/840 PSU W20L120 OC	(0.38, 0.38) SDCM ≤3

Application Conditions

Order Code	Full Product Name	Maximum dim level
97555500	SM136V 31S_37S_43S/840 PSD W20L150OCELB3	3%

Order Code	Full Product Name	Ambient temperature range
51234400	SM136V 28S_34S_40S/830 PSD W20L120 OC	-10 to +40 °C

Order Code	Full Product Name	Dimmable
51236800	SM136V 28S_34S_40S/830 PSU W20L150 NOC	No
51237500	SM136V 31S_37S_43S/840 PSU W20L150 NOC	No
51239900	SM136V 28S_34S_40S/830 PSD W20L150 OC	Yes
97553100	SM136V 31S_37S_43S/840 PSUW20L120NOCELB3	No
97554800	SM136V 31S_37S_43S/840 PSD W20L120OCELB3	Yes
51506200	SM136V 40S/830 WIA W20L120 OC	Yes
51507900	SM136V 43S/840 WIA W20L120 OC	Yes
51233700	SM136V 31S_37S_43S/840 PSD W20L120 NOC	Yes
51234400	SM136V 28S_34S_40S/830 PSD W20L120 OC	Yes

Order Code	Full Product Name	Protection class IEC
51236800	SM136V 28S_34S_40S/830 PSU W20L150 NOC	Safety class I
51237500	SM136V 31S_37S_43S/840 PSU W20L150 NOC	Safety class I
51239900	SM136V 28S_34S_40S/830 PSD W20L150 OC	Safety class II
97553100	SM136V 31S_37S_43S/840 PSUW20L120NOCELB3	Safety class I
97554800	SM136V 31S_37S_43S/840 PSD W20L120OCELB3	Safety class II
51506200	SM136V 40S/830 WIA W20L120 OC	Safety class II
51507900	SM136V 43S/840 WIA W20L120 OC	Safety class II
51233700	SM136V 31S_37S_43S/840 PSD W20L120 NOC	Safety class II
51234400	SM136V 28S_34S_40S/830 PSD W20L120 OC	Safety class II

Order Code	Full Product Name	Initial chromaticity
51236800	SM136V 28S_34S_40S/830 PSU W20L150 NOC	(0.43, 0.40) SDCM ≤3
51237500	SM136V 31S_37S_43S/840 PSU W20L150 NOC	(0.38, 0.38) SDCM ≤3
51239900	SM136V 28S_34S_40S/830 PSD W20L150 OC	(0.43, 0.40) SDCM ≤3
97553100	SM136V 31S_37S_43S/840 PSUW20L120NOCELB3	(0.38, 0.38) SDCM ≤3
97554800	SM136V 31S_37S_43S/840 PSD W20L120OCELB3	(0.38, 0.38) SDCM ≤3
51506200	SM136V 40S/830 WIA W20L120 OC	(0.43, 0.40) SDCM ≤3
51507900	SM136V 43S/840 WIA W20L120 OC	(0.38, 0.38) SDCM ≤3
51233700	SM136V 31S_37S_43S/840 PSD W20L120 NOC	(0.38, 0.38) SDCM ≤3
51234400	SM136V 28S_34S_40S/830 PSD W20L120 OC	(0.43, 0.40) SDCM ≤3

Order Code	Full Product Name	Maximum dim level
97556200	SM136V 31S_37S_43S/840 PSUW20L150NOCELB3	-

CoreLine surface-mounted

Order Code	Full Product Name	Maximum dim level
51508600	SM136V 40S/830 WIA W20L150 OC	1%
51509300	SM136V 43S/840 WIA W20L150 OC	1%
51238200	SM136V 31S_37S_43S/840 PSU W20L150 OC	-
51231300	SM136V 31S_37S_43S/840 PSU W20L120 NOC	-
51230600	SM136V 28S_34S_40S/830 PSU W20L120 NOC	-
51240500	SM136V 31S_37S_43S/840 PSD W20L150 OC	3%
51235100	SM136V 31S_37S_43S/840 PSD W20L120 OC	3%
51232000	SM136V 31S_37S_43S/840 PSU W20L120 OC	-
51236800	SM136V 28S_34S_40S/830 PSU W20L150 NOC	-

Order Code	Full Product Name	Maximum dim level
51237500	SM136V 31S_37S_43S/840 PSU W20L150 NOC	-
51239900	SM136V 28S_34S_40S/830 PSD W20L150 OC	3%
97553100	SM136V 31S_37S_43S/840 PSUW20L120NOCELB3	-
97554800	SM136V 31S_37S_43S/840 PSD W20L120OCELB3	3%
51506200	SM136V 40S/830 WIA W20L120 OC	1%
51507900	SM136V 43S/840 WIA W20L120 OC	1%
51233700	SM136V 31S_37S_43S/840 PSD W20L120 NOC	3%
51234400	SM136V 28S_34S_40S/830 PSD W20L120 OC	3%

